



WIN&I 1.0

Windows 7 Gesture Control Software for Kinect for Xbox

WIN&I opens up a new era in PC interaction. Control Windows 7 and thousands of applications with this natural user interface. WIN&I software replaces the computer mouse by tracking simple gestures from users up to several meters from the screen using the power of the Kinect depth-sensor.

WIN&I 1.0

Precise gesture control over

- Windows 7 desktop
- Windows Media Center
- MS Office
- MS PowerPoint: presentation features and laser pointer mode
- Internet Browsers
 - o Internet Explorer 8
 - o Firefox 3
 - o Safari 5
 - o Opera 11
 - o Chrome 4

...and thousands of applications

Installation notes for Win&i-v1.0 Software

Win&i-v1.0 software is using OpenNI, NITE, SensorKinect (www.openni.org) which needs to be installed first.

Please follow the instructions below to install all required software.

Unzip the already downloaded file "WIN-I.zip" - usually you will find this file in your Downloads section - to a directory of your choice, if you have not done this already. (e.g. C:\TEMP)

In your Explorer Windows please navigate to the directory. (e.g. C:\TEMP)

- 1) Please deinstall older WIN&I Versions and the Microsoft SDK for Kinect if installed before.
- 2) Doubleclick on "setup" and follow the on screen instructions to install WIN&-I-v1.0
- 3) Please copy your license-file (license.txt), which you have received by email, in the same directory of your WIN&I installation.

Please minimize the DOS-Window. Now you can start using WIN&I by waving your hand (see [WIN&I tutorial video](#)).

Windows 7 - Recommended Settings

- Windows 7: 100 or 125%
 - Use maximum cursor size
 - Use On-Screen-Keyboard
- Supported Languages: English, German
- Operating System: Windows 7

Getting started

→ Connect the Xbox Kinect sensor with your PC

Plug one end of the cable into the USB port of your PC and the other end into an electrical outlet. If you are using the Xbox console with Kinect bundle you will need to buy an USB adapter converter for Xbox 360 to PC.

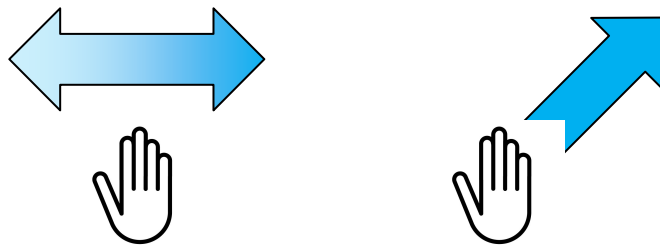
→ Place the Kinect sensor

Set the sensor below or above your TV/Monitor. Ideally, the sensor should be within 6 inches (15 cm) above or below your TV/Monitor. Place it on a safe and secure surface.

Make sure there's no direct sunlight on the sensor or you. Clear the space between you and the sensor. Tilt the sensor in the direction toward your hands. You will get best performance in a distance from 0.6 – 3.5 m from the sensor.

→ Start WIN&I and the gesture control session

Start WIN&I. The software will recognize you when you wave one hand by moving your forearm left and right or simply push your hand forward.



Windows 7 Control

→ Control the cursor/pointer

Point the palm of your hand toward the screen and move the cursor or pointer by moving your hand.

If you want to jump to a certain area on the screen use the “**Quick-Move-Function**” by moving or waving your hand fast towards this area. You can also set the virtual user area for a more convenient operation by using the “**Quick-Move-Function**”.

Quick-Move-Function

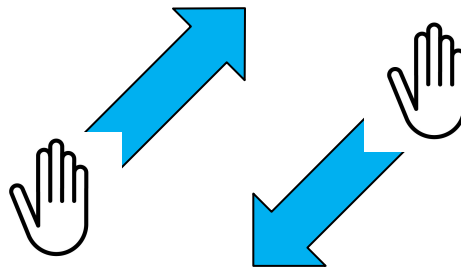


→ Perform “doubleclick”

To perform a “doubleclick”, point your cursor to the application and push your hand forward to start the application.

This will only work in the in the desktop mode and there is no need to enter the gesture mode.

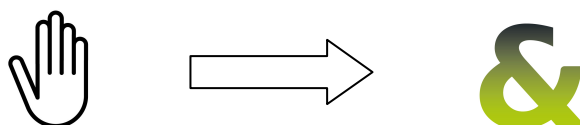
double mouse click



→ Enter the gesture mode

Move your cursor on any place on your desktop and DO NOT move your hand until the gesture mode icon “&” appears on the screen (1- 1.5 seconds).

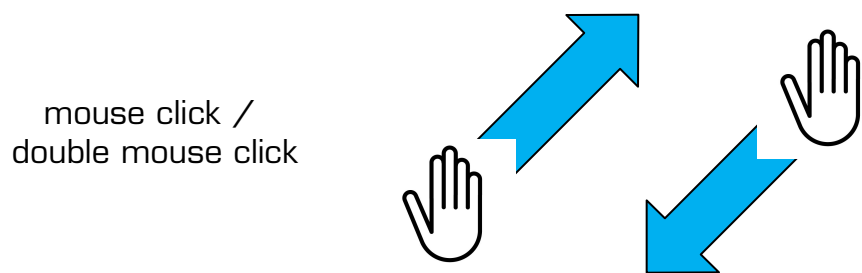
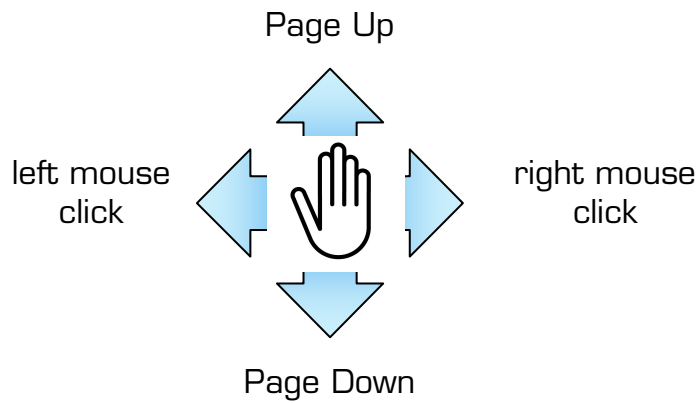
Stop moving



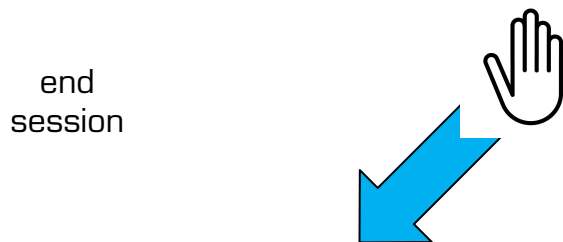
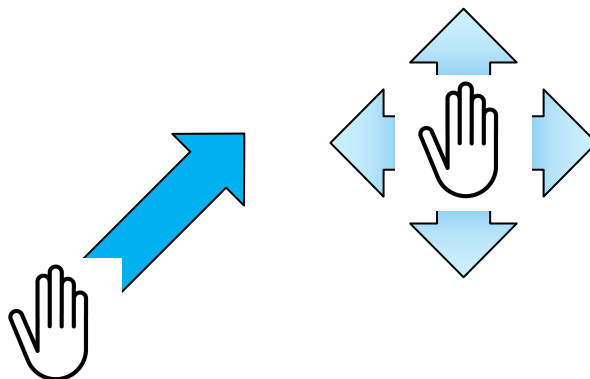
→ Gesture Mode (“&”)

When the “&” icon appears you can select these “mouse” functions with hand gestures.

Movement of your hand	Selected Performance/Function
Left	→ left mouse click
Right	→ right mouse click
Up	→ Page Up
Down	→ Down
Fast Forward and Backward	→ mouse click or double mouse click depending on current mode (Desktop/Browser etc.)
Forward and Keep Position	→ either Move/Resize/Scroll - vertical or horizontal depending on the position of the hand and the active application e.g. browser
Backward only	→ „end session“ - another user can e.g. takeover the session



Move
Resize
Scroll



→ Windows Media Center Mode – extra features

Move your hand to the left or right, up or down or simply push your hand forward to execute the various functions within the Media Center.

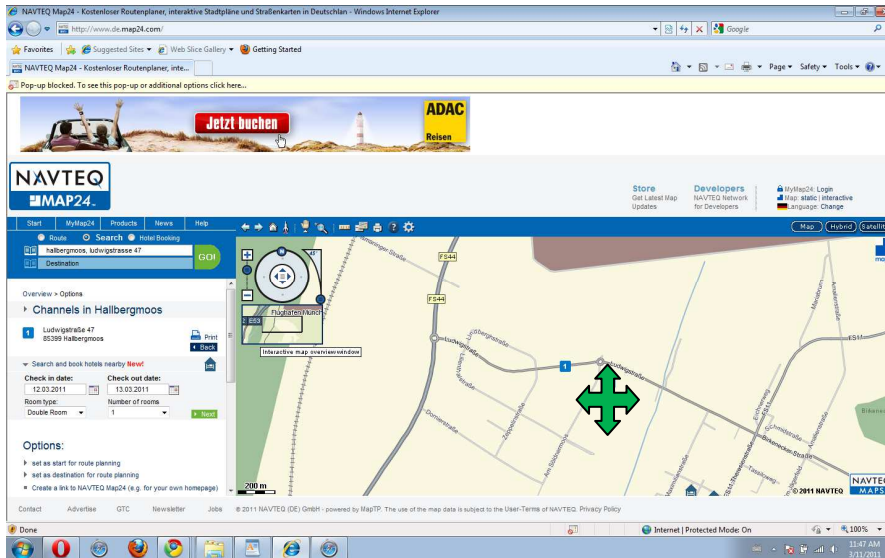


→ Browser Mode – extra features

If you move your Hand forward and keep this position for a short moment a resize or move of the selected browser window will be executed.

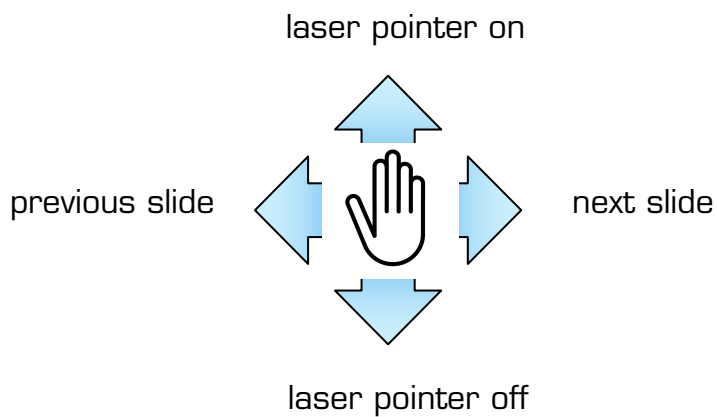


If you move your Hand forward and keep this position within a browser application you can zoom/resize/pan.



➔ **PowerPoint Mode – extra features (WIN&I Business Edition only)**

Go to the gesture mode “&” and control your presentation.



→ Settings Timing Value “&”

Every supported application has an own configuration file. To change the time how long you have to wait until the gesture icon becomes visible on the screen, you simple have to edit the appropriate configuration file. Four different timings levels

are currently supported: BEGINNER, ADVANCED, EXPERT, HERO

If you want to change the timing behavior for your browser you have to edit browser.txt

If you want to change the timing behavior for the desktop to should edit desktop.txt

If you want to change the timing behavior for office you should edit office.txt

If you want to change the timing behavior for Windows Media Center you should edit mediacenter.txt

If you want to change the timing behavior for the On Screen Keyboard you should edit osk.txt

If you want to change the timing behavior for Powerpoint you should edit powerpoint.txt

EXAMPLE:

This is how the configuration file “browser.txt” normally looks like:

```
<application>
  <maxClickThresh>150</maxClickThresh>
  <maxClickThreshEnd>100</maxClickThreshEnd>
  <maxHoldTime>ADVANCED</maxHoldTime>
</application>
```

Imagine you want to change the existing timing value from ADVANCED to EXPERT.

To change the current timing value from ADVANCED to EXPERT level, simple edit browser.txt navigate to <maxHoldTime> and change the existing value from ADVANCED to EXPERT. Note: The letters are **case sensitive** only UPPERCASE letters are allowed.

After you have done the modification the configuration file will look like the following example:

```
<application>
  <maxClickThresh>150</maxClickThresh>
  <maxClickThreshEnd>100</maxClickThreshEnd>
  <maxHoldTime>EXPERT</maxHoldTime>
</application>
```

3D-Sensing Technology

Evoluce software is using 3D-sensing devices that empower PCs with natural interaction capabilities.

Devices like the Microsoft Xbox Kinect-sensor can either sit on top of or next to a screen or a monitor. They are connected to the PC with USB and generate real-time depth, color and audio data of scene in front of the display or on the display.

It works in all room lighting conditions (whether in complete darkness or in a fully lit room). It does not require the user to wear or hold anything and does not require calibration.

Support

Send a message to Evoluce Customer Service & Support
support@evoluce.com

Evoluce Customer Service Representatives are competent professionals with product knowledge expertise to assist customers with all technical support and service issues.